

WEIGHBRIDGES

BP-F

Weighing of vans and
semi-heavy vehicles

Metal weighbridge scale, above ground or flush mounting

Easy installation

Simplified civil works

Sizes from 4m to 8m

Hermetically sealed junction box (IP 67)

SQB load cells

Certified according to European standards



Model
BP-F

CERTIFIED BY EPELSA SL





Weighbridge

BP-F



WEIGHBRIDGE

BP-F

The weighbridge scale for weighing vans offers a compact solution, configurable to the customer's needs and ready to be installed on site.

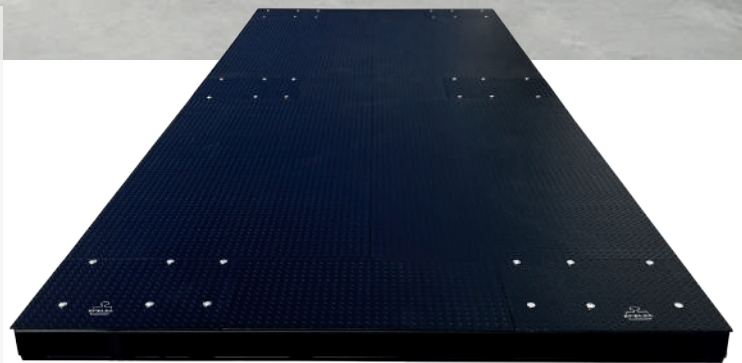
Designed to facilitate both floor and flush mounting, this scale guarantees standard transport thanks to its width of 2.47 metres.

Certified in accordance with European standards and equipped with high quality cells, its installation does not require complex civil works.

It has a corrosion-resistant structure and paintwork and a unique weight signal that will be achieved by the parallel connection of all the scale cells in a connection box made of polyester, reinforced with fibreglass and hermetic with IP 67 protection, makes this scale a reliable and accurate solution for commercial vehicle weighing.

This scale is specifically designed for the weighing of vans up to 3.5 tonnes, with an axle configuration that complies with all legal road traffic regulations. Special vehicles and vehicles with non-approved axle loads are expressly excluded, which are forbidden to circulate freely on the road.

However, the weighing of vehicles with trailers is permitted as long as the axle load of the trailer complies with the regulations for road traffic.



BP-F weighing vans

Features

Type	Metal weighbridge
Installation	Overhead or recessed
Height	220mm
Type Steel	In profiles Steel S275JR
Paint type	Polyurethane RAL 9505
Screws type	Cal 8.8 y 10.9
Sizes	From 4x2,47m to 8x2,47m
Capacities	Up to 6000kg
Load cells	Model SQB in standard installation. Consult other models.
Connection box	Aluminium IP67

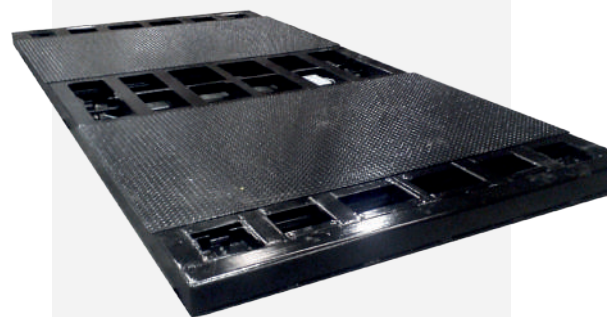
General

Installation and design

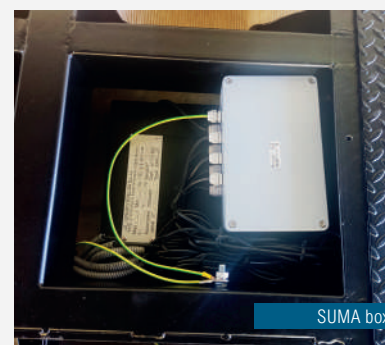
- » Fully compact model factory assembled and adjusted, facilitating on-site installation.
- » Allows EC declaration of conformity to be made in the factory, if required.
- » Access to the cells and the sum box from the top by means of screwed covers.
- » Possibility of placing the scale either on the floor or flush-mounted.
- » Incorporates cable grommets to protect the cables along their route.
- » Width of 2.47 m which allows it to be transported in standard vehicles without the need for special transport.
- » Certified according to European standards with the number T11160.

Operation and features

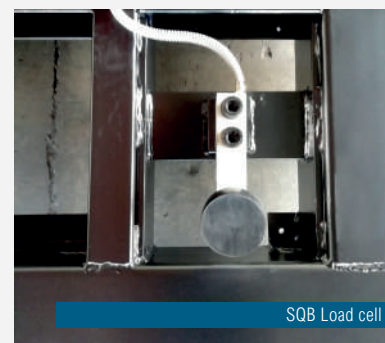
- » Supported by SQB model cells and supported on the floor by pivoting feet.
- » The pivoting feet absorb the deformations caused by the floor and the weighing process.
- » Ripped running surface prevents the vehicle from skidding.
- » Includes support and positioning plates for the pivoting feet.
- » The single weight signal is obtained by parallel connection of all scale cells in a junction box with IP 67 protection.
- » The junction box is equipped with passive elements for sensitivity adjustment.
- » It is necessary to install an earth connection according to M.I. BT039 instructions, which must be the same as the one connected to the indicator.



Structure with tear-drop surface



SUMA box



SQB Load cell



Finished installation



Data

Options

- » Metal ramps to access the model on the ground with a maximum slope of 10%. Each ramp is 1000 mm wide and 2200 mm long. With a torn tread plate and lugs for fixing to the floor.
- » Can be installed in explosive atmospheres, using EEx ia certified cubicles (For certificates and characteristics see cubicle data sheet).

Finishing / Painting

Painting of metal parts with high anticorrosive level and black colour. Cleaning and degreasing of surfaces by manual brushing in accordance with NBE-EA-95.

Finishing of metal parts will be done with 2-component polyurethane paint, anticorrosive for steel and galvanised steel, fast drying and high mechanical resistance, colour black RAL 9505 with slightly glossy finish.

Suitable for corrosion categories C1, C2 and C3 according to EN ISO 12944-2 as a single coat system with a minimum dry film thickness of 80 µm.

Other finishes on request.

Load cells

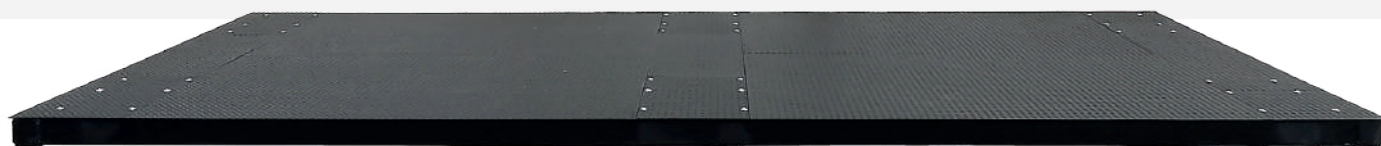
Model SQB in its standard installation.
SQB CHARACTERISTICS

- » Load cell with a maximum number of 3000 divisions.
- » It has encapsulated strain gauges.
- » Connecting cable with PVC sheath, 5 m long. Diameter 6 mm.
- » IP68 protection.
- » Heat-treated and electroless nickel-plated steel body.
- » Capacity: 3t



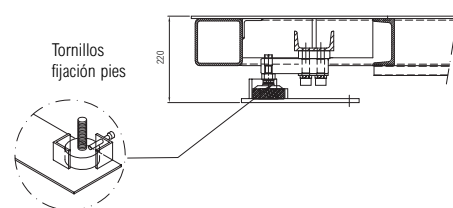
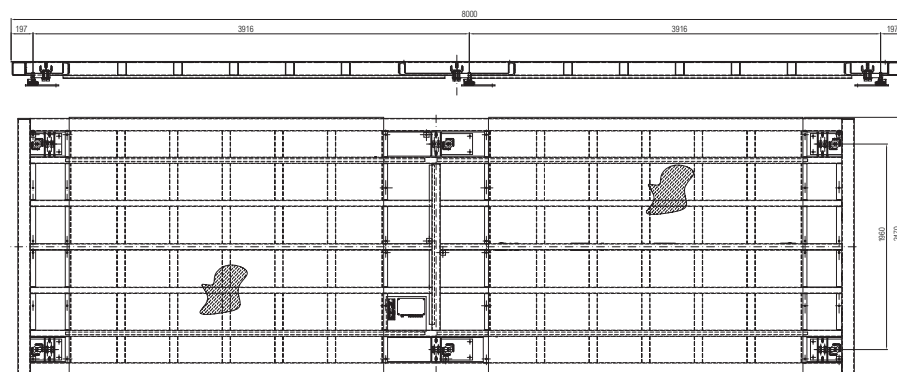
Certifications

Certified as EU type according to EN45501:2016 under No. T11160 together with the sight glasses mentioned in this certificate.



Dimensions

Compact weighbridge scale with sizes from 4x2,47 m to 8x2,47 m.



Loading conditions

LIMITATIONS ON MOVEMENT ON SCALES

Platform designed for the intensive use of standard vans for road use, with a MAW (Maximum Authorised Weight) of 3500kg and with axle and load arrangement suitable for free circulation on the road.

These vans are expected to be fitted with an approved 750kg trailer.

Sporadic overloads distributed over the whole vehicle of less than 15% are permitted.

If these overloads are constant and/or higher, the lifetime of the platform may be affected.

Due to the axle overloads that exist on forklift trucks (~3500kg for 1500kg capacity trucks), it is not advisable to run them on the platform.

For other uses, loads and dimensions please consult our distributors.



Standard vans with a gross payload of 3500 Kg



Vans with a gross laden weight of 3500 Kg
750Kg trailer

Capacities References

Description	Dimensions metres	Load cells no.	Capacity setting t	Div. kg	Approved range finders	References
Weighbridge BP-F 4 - 4 x 2,7 metros (6 t / 2kg)	4 x 2.47m	4	6	2 kg	Orion, Bi, Cyber	0169241000
Weighbridge BP-F 5 - 5 x 2,7 metros (6 t / 2kg)	5 x 2.47m	6	6	2 kg	Orion, Bi, Cyber	0170765000
Weighbridge BP-F 6 - 6 x 2,7 metros (6 t / 2kg)	6 x 2.47m	6	6	2 kg	Orion, Bi, Cyber	0170762000
Weighbridge BP-F 7 - 7 x 2,7 metros (6 t / 2kg)	7 x 2.47m	6	6	2 kg	Orion, Bi, Cyber	0170784000
Weighbridge BP-F 8 - 8 x 2,7 metros (6 t / 2kg)	8 x 2.47m	6	6	2 kg	Orion, Bi, Cyber	0170764000