

INDUSTRIAL SET

LMA-40

- » RE-STYLING
- » STAINLESS STEEL HOUSING
- » PLATFORM LM 40x40
- » ORION ENERGY-EFFICIENT INDICATOR
- » INTERNAL BATTERY
- » MULTI-PURPOSE SET
- » EASY TRANSPORT



Model
LMA-40

CERTIFIED BY GRUPO EPELSA SLU



Industrial set

LMA-40

Platform LM 40 and Orion indicator

LMA-40: All-in-one solution

The LMA-40, consisting of the Orion indicator and the LM 40 platform, represents an advanced and versatile solution for industrial weighing applications.

Designed by EPELSA, this system combines accuracy, durability and connectivity, providing any industry with an effective tool for weight control and materials management.

With its robust stainless steel design and advanced features, the LMA-40 is ideal for a wide range of applications, from weighing individual parts to batching and quality control.

Ease of integration with computer systems and printing capabilities make this set a good choice for industries



Versatile industrial set in stainless steel

looking to optimise their weighing and data handling processes.



Adapted support for the visor and platform.



Features

Type	Industrial table-top set
Housing	Stainless steel
Indicator	Orion with LED display. 7 digits.
Connections	2 x RS-232/C AND 1 x RS-422). Optional: SUB-D15H, SUB-D9H and Ethernet connector
Battery	Internal long-life battery (up to 250 hours)
Protection	IP 65
Dimensions	40x58x18 (An x L x Al)
Weight	13 Kg

General

ORION INDICATOR

Compact bi-bascul indicator with output to computer, printer and repeater

- **Weighing operations:** Supports multiple tare types, piece counting, over/under checkweighing, simple batching, live animal weighing and maximum effort detection.
- **Material and protection:** Matt polished stainless steel finish with IP-65 protection.
- **Connectivity:** Connection of weighing and serial channels via watertight 15-way SUB-D connectors.
- **Mounting:** Can be mounted on a table or on the wall.
- **Display:** LED display with 7 digits .
- **Power consumption and power supply:** Low power consumption indicator (max. 8W) with internal battery with long battery life (up to 250 hours) and charging time of less than 6 hours.
- **Serial and connectors:** Incorporates serial channels for connection to a computer, printer, labeller or repeater.
- **Weighing capacities:** Supports up to 100,000 display divisions on each of the 2 scales.
- **Calibration and adjustment:** Total configuration by keypad.
- **Indicators:** Display of multiple statuses and units, including GROSS, NET, TARE, ZERO, TOTAL, STABILITY, among others.



LM 40 PLATFORM

Robust and versatile platforms with IP-65 protection.

- **Material and design:** Steel structures painted in glossy grey RAL 7045 with a robust tubular design and IP-65 protection in stainless steel AISI 304.
- **Load cells:** Aluminium load cells approved to 3000 divisions, with protection against static overloads.
- **Capacities:** 15, 30, 60 and 150 kg.
- **Connectivity:** with 2.5 m cable with 6 wires plus ground with aluminium shielding, except for NAn model cells which is minimum 1.3 m long and only 4 wires plus ground with shield.
- **Functions:** Suitable for standard weighing, +/- control, piece counting, manual labelling, packaging, inventory and order picking.



Adjustable rubber feet



Painted stainless steel platform



Orion Visor Connections

LMA-40

SET

Technical data

ORION INDICATOR

- » Maximum Consumption: 8W
- » Battery: 3.7 V, 2,300 mAh (lithium-polymer), battery life up to 250 hours, charging time < 6 hours
- » AC power supply: 100 to 240V (+10%, -15%) single-phase with earth connection
- » Serial channels : 2 x RS-232/C and 1 x RS-422, for connection to PC, printer, labeller or repeater.
- » Internal resolution: 4,000,000 dots.
- » Number of divisions n: ≤ 7500 .
- » No. of Platforms: 2
- » Possibility of multi-interval or multi-range ($n_i \leq 3000$ for each partial range) with a maximum of 2 ranges or intervals.
- » Includes non-volatile RAM for data backup.
- » Net Weight: 2.5 kg / Packed Weight: 3.33 kg
- » Packing Dimensions: 27 x 31 x 18 cm

Options

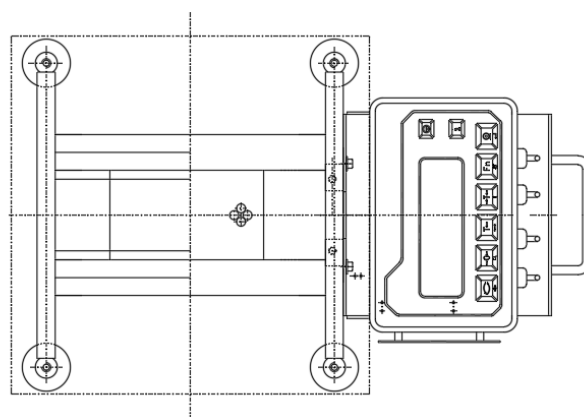
- » Relay board (setpoints): 1 connector SUB-D15H
- » Analogue Output Board: (0-5 V / 0-10 V / 4-20 mA) 1 connector SUB-D9H
- » Ethernet Output Board

Software and capacity

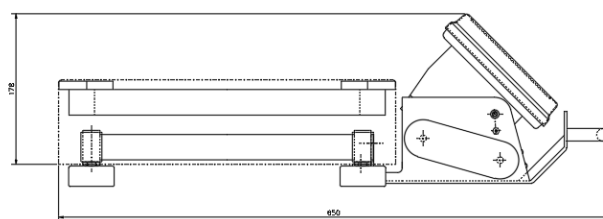
- » Management software: Compatible with weighing and labelling management software, facilitating integration with enterprise systems.
- » Integration capabilities: Allows accumulation of weights and communication with computer systems for efficient data management.
- » Print options: Print tickets or labels directly, optimising the workflow.

40X40 PLATFORM

- » Steel structure painted in glossy grey RAL 7045 with a robust tubular design.
- » Protection: IP-65
- » Height adjustable feet with rubber feet, AISI 304 stainless steel hardware.
- » Aluminium load cells approved to 3000 divisions
- » Capacities: 15 kg, 30 kg, 60 kg, 150 kg
- » Connectivity: 2.5 m cable
- » Overload protection.



Aerial view



Profile view

Test Certificate according to European Standard EN-45501 for non-automatic weighing instruments with No. TC7677, issued by the NMI (Nederlands Meetinstituut) of the Netherlands. - OIML Certificate of Conformity No. R76/2006-NL1-10.05, issued by the NMI (Nederlands Meetinstituut) of the Netherlands.

The LMA-40 assembly has EU Type Examination certificate no. T11160, including 2 ranges.

LMA-40 is a self-contained, transportable device with a long-life internal battery with legal metrology.

References

NAME	REFERENCE	MINIMUM HEIGHT. (With feet mm)	WEIGHT KG	LOAD CELL	FINISH
LMA-40 15KG (LM+ORION)	00604500EN	125	9	L6N 30kg	Structure: Painted or Stainless steel
LMA-40 30KG (LM+ORION)	00604510EN	125	9	NA2 60kg	Structure: Painted or Stainless steel
LMA-40 60KG (LM+ORION)	00604520EN	125	9	NA2 100kg	Structure: Painted or Stainless steel
LMA-40 150KG (LM+ORION)	00604530EN	125	9	NA2 200kg	Structure: Painted or Stainless steel