

**MULTIFUNCTION INDICATOR**

# ML500 LINERLESS PRO

- » AUTO-CUTTER
- » STAINLESS STEEL HOUSING
- » LINERLESS PRO PRINTER FOR TICKETS OR LABELS
- » PRINTING UP TO 80MM
- » 12" TOUCH SCREEN
- » 9" REAR SCREEN (OPTIONAL)



**Model**  
**ML500 LINERLESS PRO**

CERTIFIED BY EPELSA





## Multifunction indicator

# ML500 LINERLESS PRO EVO

### ML500 LINERLESS PRO EVO INDICATOR

The ML 500 with Linerless Pro EVO is here to transform the way tickets and tags are printed.

With a 12-inch display for the merchant and a 9-inch display for the customer, this ticket and label printer offers an unrivalled visual experience. In addition, its compatibility with Linux or Windows systems ensures seamless integration with your work environment.

The new ML500 printer of the ML500 display prints at a speed of up to 250mm/s, with a resolution of 203 dpi (640 dots/line) and has an auto-cutter.

It is valid for tickets up to 80mm wide and a maximum paper roll diameter of 100mm, with no length limit configurable from our ENCASE ticket and label software and now also in linerless format.



Possibility to print on paper formats:

- Continuous roll of standard tickets.
- Linerless roll (ECO adhesive paper type, eliminating printing waste).

With this type of paper it is possible to print tickets of variable length or to configure the ticket in label format, depending on the data to be printed, which means a drastic reduction in paper.

In addition, the roll change is done in a matter of seconds thanks to the 'Easy Load' fast loading system. The printer slides on a rail, making it easy to remove and clean.

## Features

Type	Counter top labelling indicator
Housing	Stainless steel
Display	12" touch screen on vendor side, 9" on customer side
Connections	Gbit Ethernet. USB 2.0 and 3.0. RS-232. Audio output. VGA (WiFi optional).
O.S.	Linux Ubuntu 24.04. Available Windows 10 LTSC
Memory	RAM SO-DIMM DDR4 8 Gb. Storage SSD 128 Gb.
Dimensions	24,1 x 33 x 33,5 cm (W x D x H)
Weight	9Kg

## General

### Large Size Screens:

This display incorporates a 12-inch high-contrast touch screen for the operator and a 9-inch touch screen for the customer. The ML500 Linerless Pro EVO offers a clear and detailed display of all the information required for any process, ensuring an optimal user experience.

### Connectivity:

Possibility to interconnect several devices in an Ethernet network.

Possibility of connection to external printers and labellers via USB or Ethernet.

Connection to EPELSA repeaters.

RS232 or USB scanner.

Etc.

### Memory:

Unlimited storage capacity for products, customers, families, counters, vendors, etc. Management, traceability of beef, fish, fruit and vegetables, generic.

Nutritional information, as well as allergenic ingredients.

Printing of packaging data per product including unlimited number of characters.

### Logo printing:

Its many and varied functions include the printing of packaging data per product with an unlimited number of characters, as well as the possibility to include nutritional and allergen ingredient information. In addition, the ML500 allows the printing of various types of logos, such as company, item or quality icons, as well as the selection of separate allergen ingredient icons per product.

Company logo, item logo, quality icons, selection of allergen ingredient icons per product.

### Bar codes:

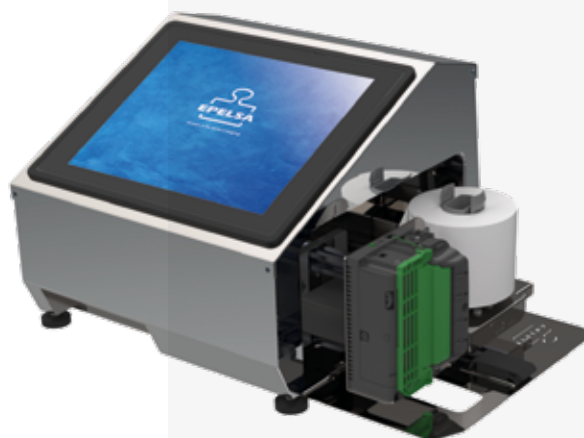
EAN13, EAN8, ITF14, ITF25, CODE128, EAN128, GS1 DATABAR, DATAMATRIX, QR Code, among others.

### Software:

Connection with NAUTILUS (Cloud software), Desktop.

Document design with ENCASE..

EpelSoft Range.



Back connections



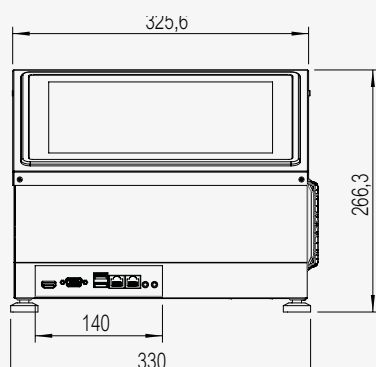
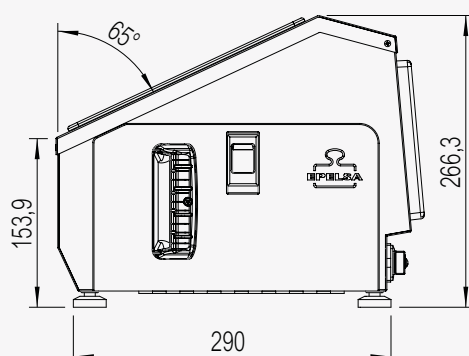
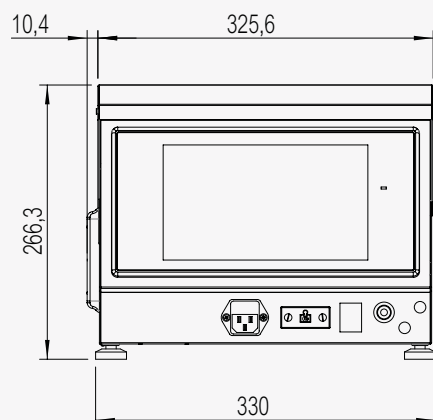
Ticket and label exit with slit



Front connections

# INDICATOR ML 500 Linerless Pro

## Technical drawings



## Technical data

### Technical characteristics

- » Linux Ubuntu 24.04. Available Windows 10 LTSC
- » RAM SO-DIMM DDR4 8 Gb. Storage SSD 128 Gb.
- » Gbit Ethernet. USB 2.0 and 3.0. RS-232. Audio output. VGA (WiFi optional).
- » USB connectivity (4 External: 2x2.0 / 2x3.0).
- » RS232 port 115000 bd.
- » External Godex labeller connection.
- » Scanner connection.

### SOFTWARE

The software, developed by Epelsa Group, provides the device with a multi-function work, being able to operate in different sales modes, such as sales, packaging or self-service. It offers configurable sales screens, multimedia advertising, invoicing module, tariff management and loyalty system, industrial mode, direct functions, programmable tares, quick sale keys, OVER-UNDER levels, piece counter, Zero Waste...

- » Desktop and Nautilus
- » ENCASE: Label and ticket design software.
- » Webserver: For programming and data consultation.
- » Remote and automatic software updates.
- » Operating System: Linux Ubuntu or Windows.
- » Remote maintenance, VNC, FTP, SSH, SCP, TeamViewer...

### CAPACITIES

- » From 3kg to 90000 kg
- » Programmable capacities (user defined)
- » Multi-range or multi-interval.
- » 1 or 2 intervals or ranges of 3000 or 6000 divisions.

### Others

Complies with EU Regulation 1169/2011, providing nutritional information, allergens, etc. NMI certified in accordance with WELMEC 8.8 Issue 2, EN 45501:2015, OIML R 76-1 (2006).



### References

Model	Reference
ML-500 LINERLESS PRO LINUX (without back display)	000013980507
ML-500 LINERLESS PRO WINDOWS (without back display)	000013980508
ML-500 LINERLESS PRO LINUX (with back display)	000013980507D
ML-500 LINERLESS PRO WINDOWS (with back display)	000013980508D